

# Basler Accessories



## Technical Specification

### **USB 3.0 CARD PCIe, FRESCO FL1100, 4 HC, x4, 4 PORTS**

**Order Number**  
**2000036233**

Document Number: DG001772  
Version: 03 Language: 000 (English)  
Release Date: 11 January 2018

## **Contacting Basler Support Worldwide**

### **Europe, Middle East, Africa**

Basler AG  
An der Strusbek 60–62  
22926 Ahrensburg  
Germany

Tel. +49 4102 463 515  
Fax +49 4102 463 599

[support.europe@baslerweb.com](mailto:support.europe@baslerweb.com)

### **The Americas**

Basler, Inc.  
855 Springdale Drive, Suite 203  
Exton, PA 19341  
USA

Tel. +1 610 280 0171  
Fax +1 610 280 7608

[support.usa@baslerweb.com](mailto:support.usa@baslerweb.com)

### **Asia-Pacific**

Basler Asia Pte. Ltd.  
35 Marsiling Industrial Estate Road 3  
#05–06  
Singapore 739257

Tel. +65 6367 1355  
Fax +65 6367 1255

[support.asia@baslerweb.com](mailto:support.asia@baslerweb.com)

[www.baslerweb.com](http://www.baslerweb.com)

**All material in this publication is subject to change without notice and is copyright Basler AG.**

| Order Number | Description                                            | Applicable Cameras               |
|--------------|--------------------------------------------------------|----------------------------------|
| 2000036233   | 4-port USB 3.0 Host Controller Card, A-type Receptacle | ace USB 3.0, dart USB 3.0, pulse |

Table 1: Host Controller Card Type

## Key Features

With this USB 3.0 host controller card you can add USB 3.0 connectivity to your system, which will allow you to benefit from USB 3.0 features, or you can increase the number of existing USB 3.0 ports. Following is a list of the card's key features:

- PCIe x4 Gen2
- USB 3.0 SuperSpeed 5 Gbps per port
- 4 FrescoLogic FL 1100 chipsets
- Compliant with USB 3.0 Specification Revision 1.0




Basler recommends using Basler-qualified cables. These can be purchased via the Basler website: [www.baslerweb.com](http://www.baslerweb.com)

## Technical Specifications

|                     |                                                                                                                                                                                                                                                                                                                                                                                                                                                                                                                               |
|---------------------|-------------------------------------------------------------------------------------------------------------------------------------------------------------------------------------------------------------------------------------------------------------------------------------------------------------------------------------------------------------------------------------------------------------------------------------------------------------------------------------------------------------------------------|
| Physical Dimensions | 101 mm x 120 mm                                                                                                                                                                                                                                                                                                                                                                                                                                                                                                               |
| Camera Power Supply | <ul style="list-style-type: none"> <li>■ Via SATA 15-pin power connector (5 V)</li> <li>■ Via IDE 4-pin DC power connector</li> </ul> <p>If you're using the SATA connector, an appropriate external power supply must be used.</p>                                                                                                                                                                                                                                                                                           |
| USB 3.0             | <ul style="list-style-type: none"> <li>■ Compliant with USB 3.0 Specification Revision 1.0</li> <li>■ Supports 4 downstream ports (all speeds)</li> <li>■ Supports ultra-high performance isochronous applications</li> <li>■ Backward compatible with high, full, and low speed</li> </ul>                                                                                                                                                                                                                                   |
| PCIe                | <ul style="list-style-type: none"> <li>■ Compliant with PCI Express Base Specification Revision 2.0</li> <li>■ Compliant with Intel's eXtensible Host Controller Interface (xHCI) Specification Revision 1.0</li> <li>■ Compliant with PCI Bus Power Management Interface Specification Revision 1.2</li> </ul>                                                                                                                                                                                                               |
| Transfer Rates      | <ul style="list-style-type: none"> <li>■ 1 Camera                             <ul style="list-style-type: none"> <li>■ Up to 380 MBps <b>per port</b> reliably supported</li> </ul> </li> <li>■ Multiple Cameras                             <ul style="list-style-type: none"> <li>■ Up to 1.52 GBps <b>total</b> bandwidth reliably supported</li> </ul> </li> </ul> <p>For best performance, use new processor generations, e.g. Skylake and x8 or x16 PCIe slots.</p>                                                     |
| System Requirements | <ul style="list-style-type: none"> <li>■ Processor                             <ul style="list-style-type: none"> <li>■ Minimum: Intel Ivy Bridge or higher</li> <li>■ Applications with high transfer rates: Intel Haswell or higher</li> <li>■ Tested by Basler with Ivy Bridge, Haswell, and Skylake processor generations</li> </ul> </li> <li>■ Minimum 4 GB RAM</li> <li>■ Operating System                             <ul style="list-style-type: none"> <li>■ Windows 7</li> <li>■ Windows 10</li> </ul> </li> </ul> |

Table 2: Technical Specifications

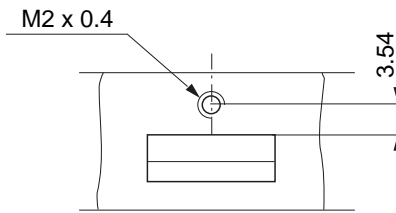
|                                                                                     |                                                                                 |
|-------------------------------------------------------------------------------------|---------------------------------------------------------------------------------|
|  | <p>For best performance, always keep drivers updated to the latest version.</p> |
|-------------------------------------------------------------------------------------|---------------------------------------------------------------------------------|

## Environmental Specifications

|                       |                                   |
|-----------------------|-----------------------------------|
| Operating Temperature | 5–60 °C                           |
| Operating Humidity    | 10–70 %, relative, non-condensing |
| Storage Temperature   | 5–70 °C                           |
| Storage Humidity      | 10–70 %, relative, non-condensing |

Table 3: Environmental Specifications

## USB 3.0 Cable Lock Mechanism



Dimensions in mm

Fig. 1: Locking Screw Positions

## Working with Large Image Sizes

If you're working with image sizes above 6 MB, the ring buffer of the Fresco Logic driver must be increased.

### To increase the ring buffer:


- Using the Registry Editor, open the following subkey:  
HKEY\_LOCAL\_MACHINE\SYSTEM\CurrentControlSet\Services\FLxHC1c\Parameters
- Right-click the **BulkInRingBuffers** entry, and click **Modify**.  
The default size is 48 pages.
- Change the value to 256 pages (decimal).  
The new value must be a multiple of 8. The maximum value is 256 pages.
- Reboot the computer.

If you need more information, please contact Basler Technical Support.

## General Information

|            |                     |
|------------|---------------------|
| Conformity | CE, RoHS, FCC, VCCI |
| Warranty   | 1 year              |

Table 4: General Information

|                                                                                   |                                                                                                                                                                                                                                                                                                                                                                |
|-----------------------------------------------------------------------------------|----------------------------------------------------------------------------------------------------------------------------------------------------------------------------------------------------------------------------------------------------------------------------------------------------------------------------------------------------------------|
|  | This host controller card is suitable for high transfer rates (see <a href="#">page 2</a> ). If your application works in the medium transfer rate range, consider using the USB 3.0 Card PCIe, Fresco FL1100, 1 HC, x1, 4 Ports (order number 2200000069). This is available via the Basler website: <a href="http://www.baslerweb.com">www.baslerweb.com</a> |
|-----------------------------------------------------------------------------------|----------------------------------------------------------------------------------------------------------------------------------------------------------------------------------------------------------------------------------------------------------------------------------------------------------------------------------------------------------------|

## Revision History

| Doc. ID Number | Date        | Changes                                                                   |
|----------------|-------------|---------------------------------------------------------------------------|
| DG00177201000  | 13 Dec 2016 | Initial release of this document.                                         |
| DG00177202000  | 9 Jun 2017  | Added environmental specifications in Table 3 on <a href="#">page 3</a> . |
| DG00177203000  | 11 Jan 2018 | Corrected positioning information in Figure 1 on <a href="#">page 3</a> . |