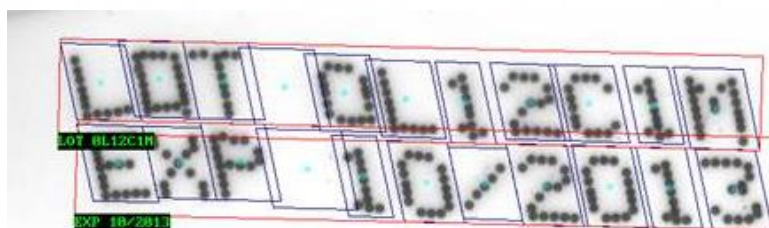
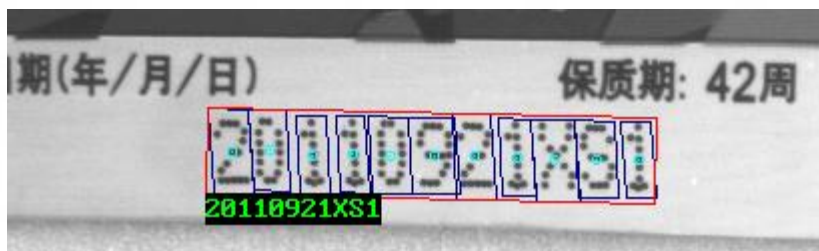
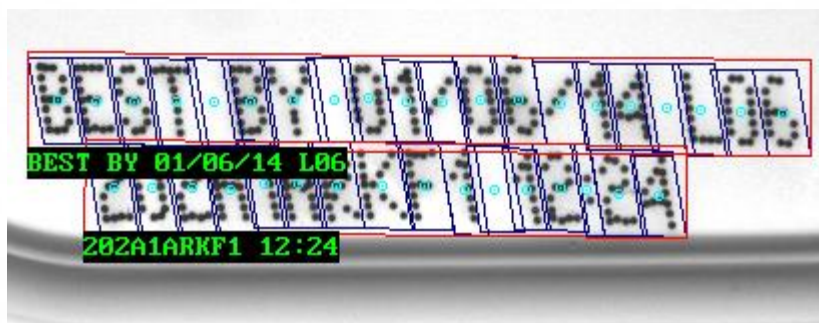


Matrox Imaging Library (MIL) 10

Processing Pack 2



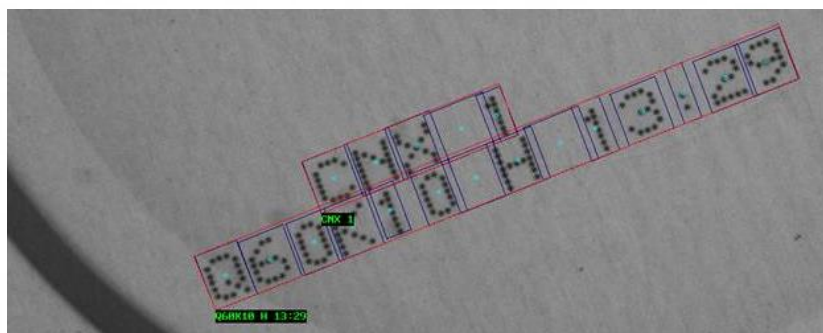
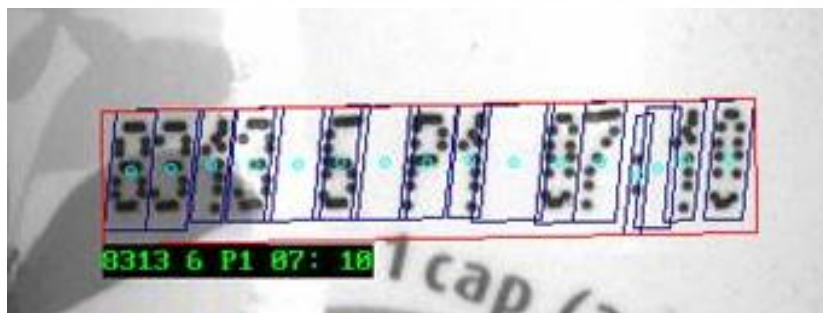
New SureDotOCR™



- » Designed for reading dot-matrix text
- » Straightforward to use
- » Robust to irregular type, background and illumination
- » Handles rotated text



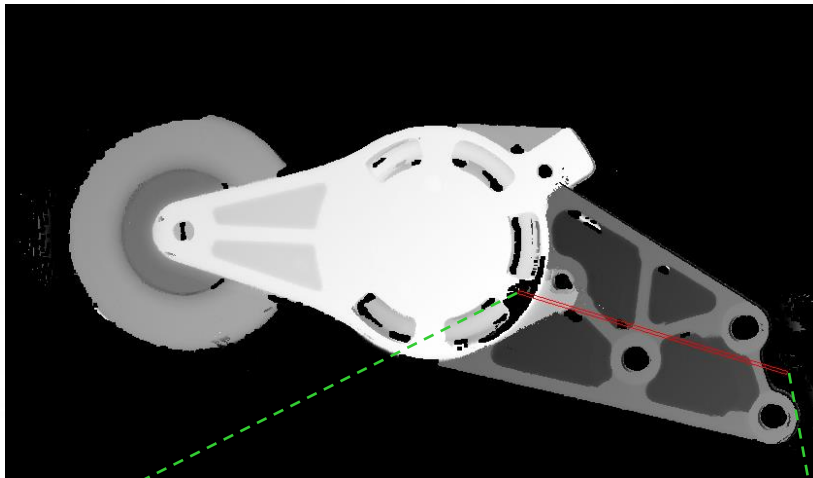
New SureDotOCR™ (cont.)



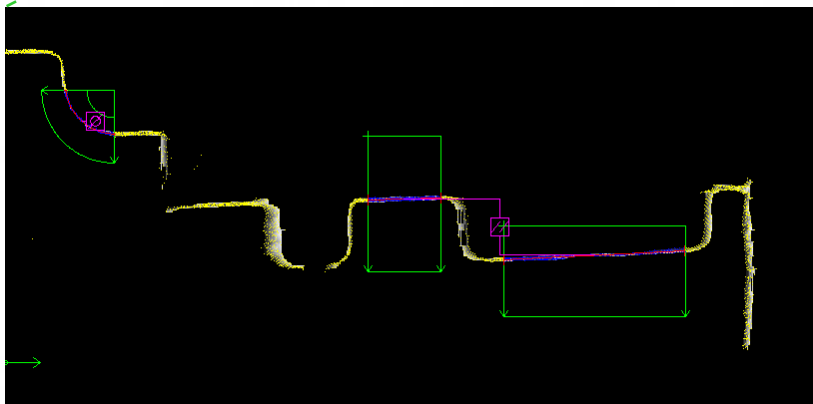
- » Supports user-defined fonts and includes predefined fonts
- » Accepts constraints for even better recognition
- » Recognizes punctuation marks and blank spaces
- » Reads multiple lines with different fonts



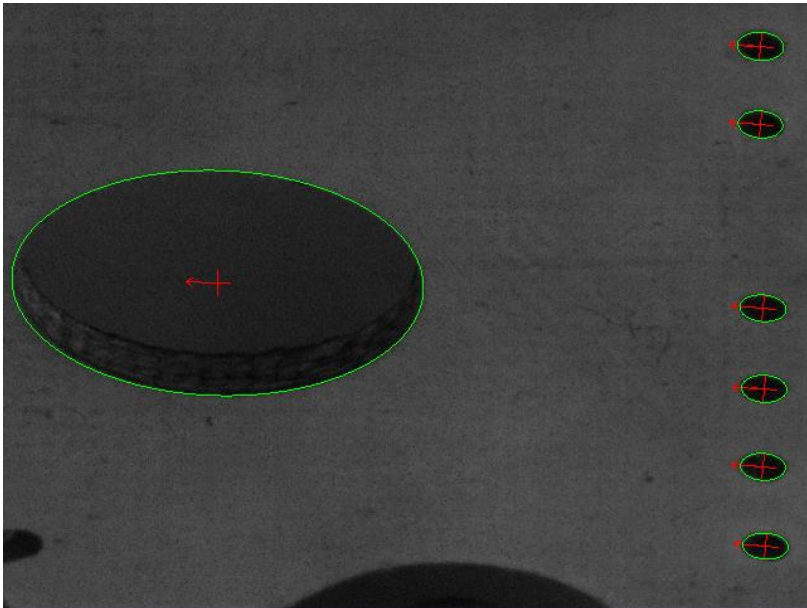
3D cross section analysis



- » Extract cross section from point cloud at any angle
- » Analyze cross section using Metrology tool



New Ellipse finder



- » Dedicated tool for locating ellipses
- » Faster, more robust and more flexible than generic techniques
- » Part of Geometric Model Finder package (new context type)



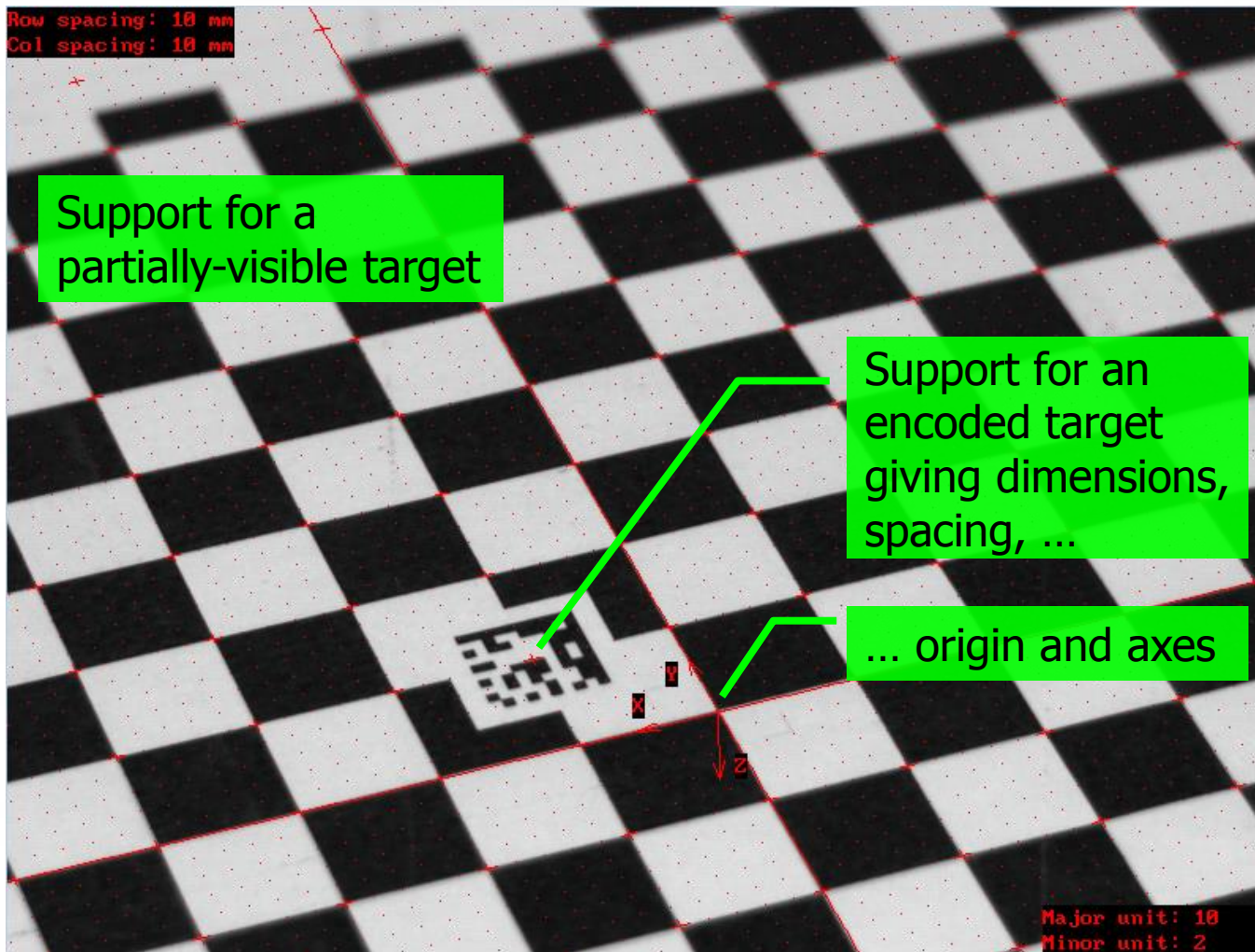
Improved Code Reader



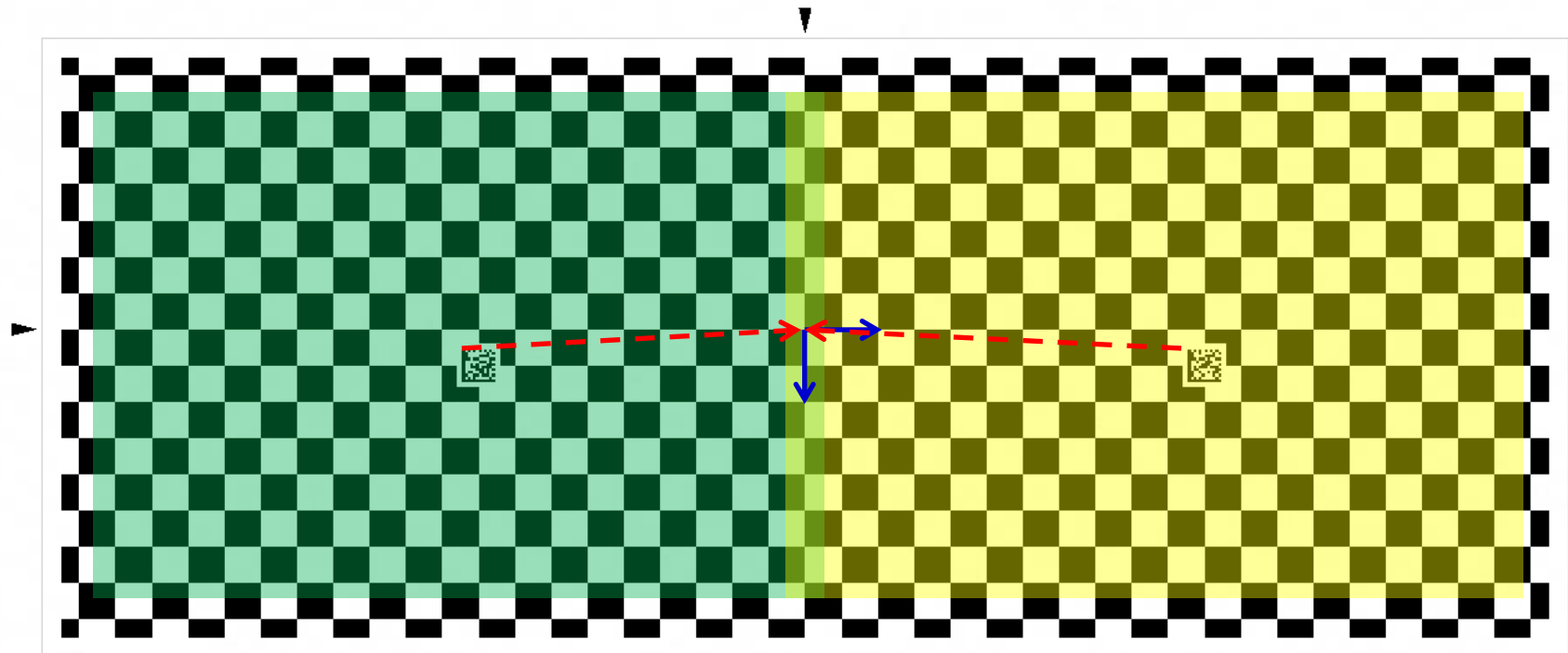
- » Reads in more instances with a new initialization mode
- » Better reading of blurred and low resolution 1D codes



Enhanced calibration



Multi-camera/view calibration



Grid size: 420 mm x 170 mm Row/column number: 16 x 41 Row/column spacing: 10 mm x 10 mm

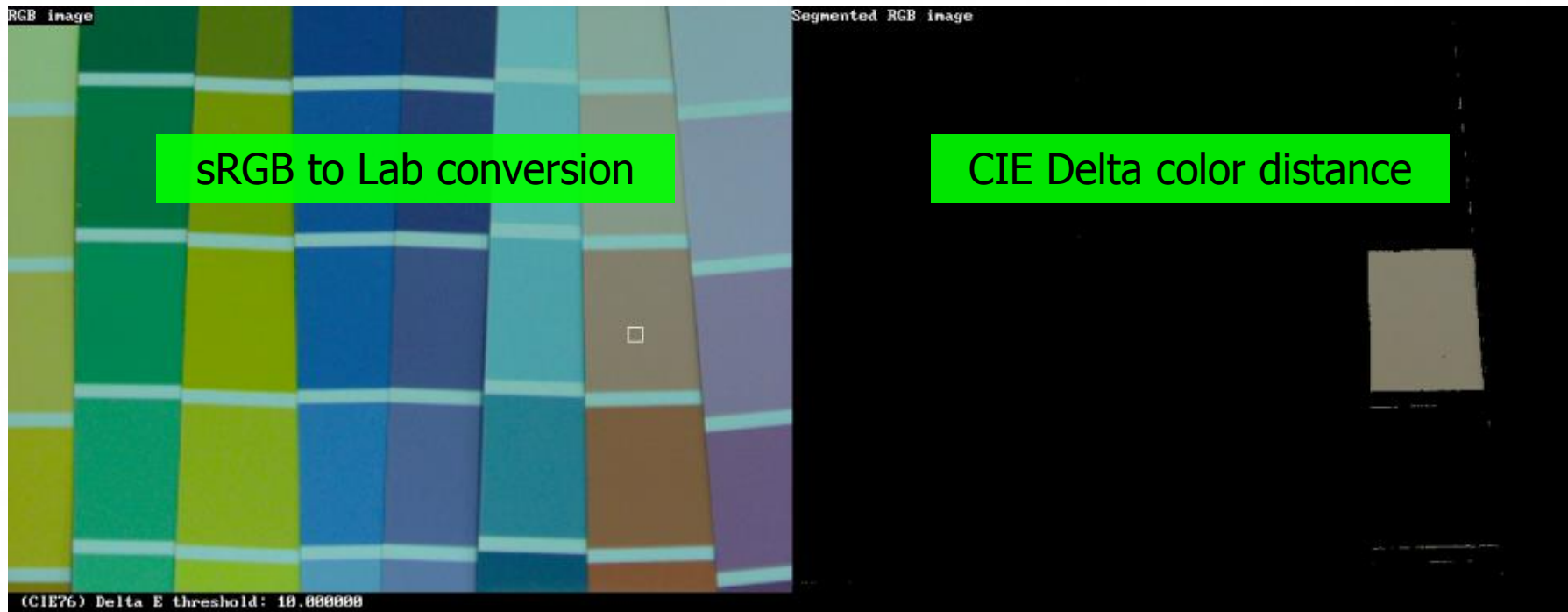
Camera/position 1 FoW:



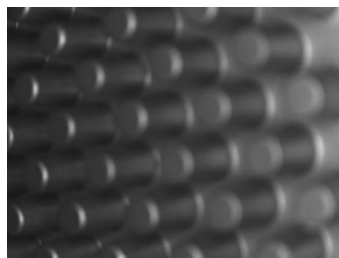
Camera/position 2 FoW:



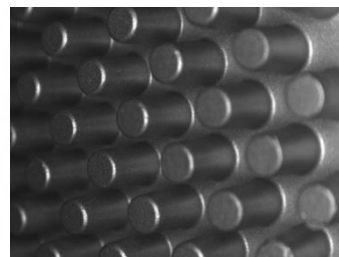
Enriched color processing



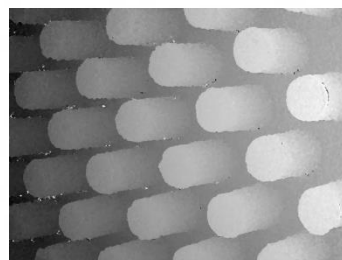
Depth from focus



...



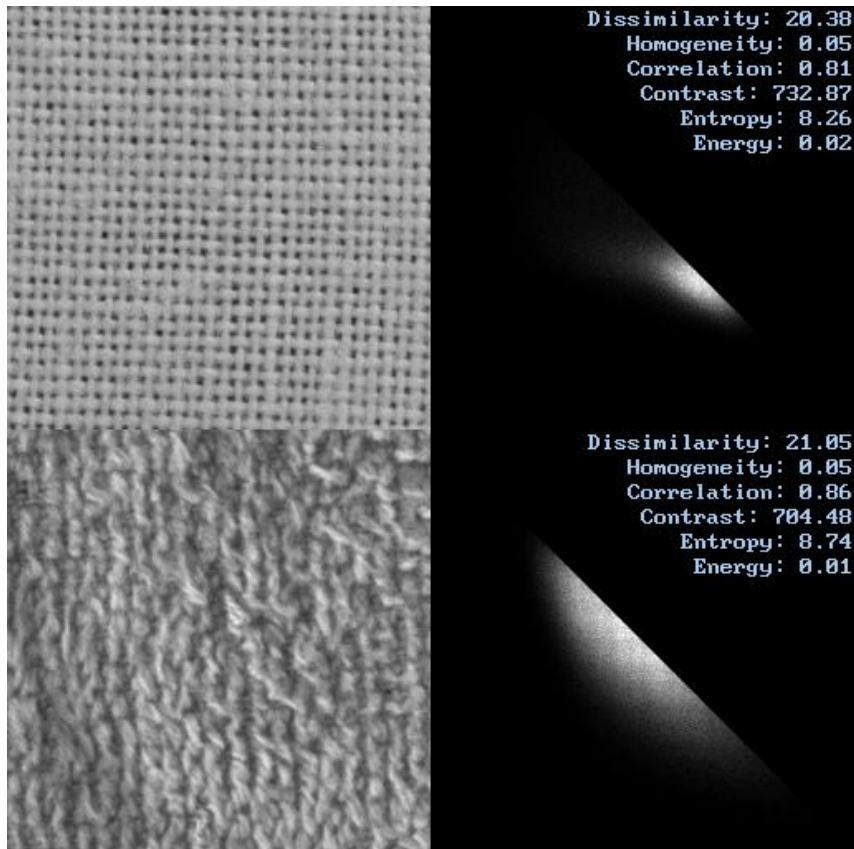
...



- » Generate an index image from a series of images at different focus points
- » Part of Registration package



Additional processing primitives



- » Texture statistics
- » Integral image
- » More projections
- » etc.



New examples



Matrox Example Launcher

Explore

Categories	Examples
All	3dGapAndFlush
Overview	3dProfileMetrology
General	AlphaBlending
Advanced	CIELabConversion
Distributed MIL	DepthFromFocus
Applications	DmrEditFontFile
Modules	DmrGenFontFile
Licenses	DmrShowFontFile
Languages	EllipseShapeFinder
Notes	LMIGocator3110
What's New	MbufCreate
MIL 10.0 PP2	Mcal
MIL 10.0 PP1	MdispTk
MIL 10.0 U37	Mdmr
MIL 10.0 U24	MedgeCustomDerivatives
MIL 10.0	MetrologyOnBlobs
MIL 9.0 PP2	MgenLutFunction
MIL 9.0 PP1	Projection
MIL 9.0	Simple3dBinPicking
Older	Simple3dStitching
	UnwrapMultiviewCylinder
	USDotNumberStr

Discover

Description Categories Keywords

Simple3dBinPicking

This example shows how to combine a 2D Model Finder and a 3D alignment in order to estimate the pose of 3D objects stacked with little variations in pitch and roll.

Languages: [C++](#)

Functions: [+] [M3dmapAlign](#), [M3dmapAlloc](#), [M3dmapAllocResult](#), [M3dmapClear](#), [M3dmapControl ...](#)

Licenses: [3D Calibration & Reconstruction](#), [Geometric Model Finder](#)

Run Edit Open directory

Change MIL default settings Microsoft Visual C++ 2012

