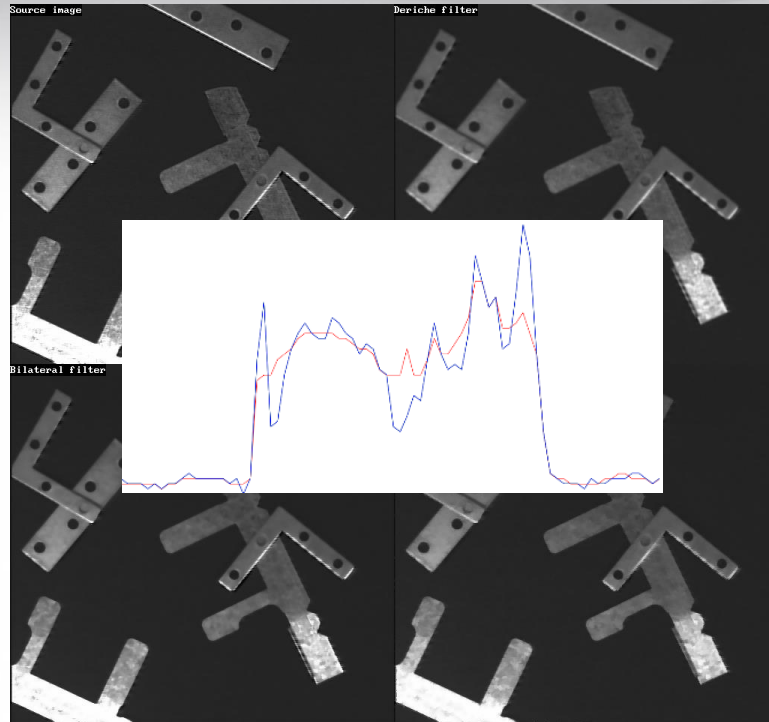


Matrox Imaging Library (MIL) 10

Processing Pack 3



Additional processing primitives



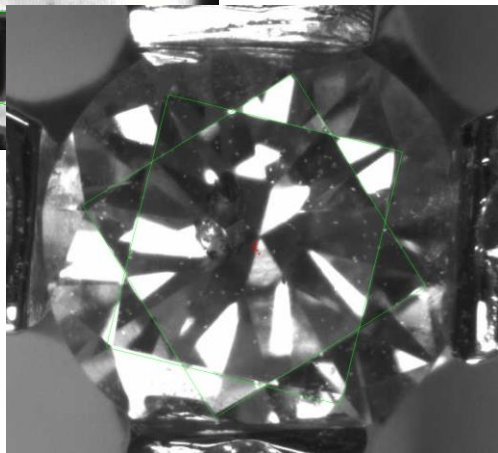
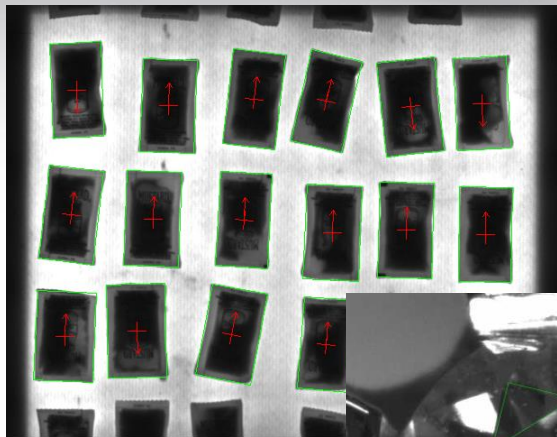
- » Edge-preserving filters
- » Fast adaptive Bayer interpolation mode
- » More arithmetic operations
- » etc.

Improvements to Code Reader



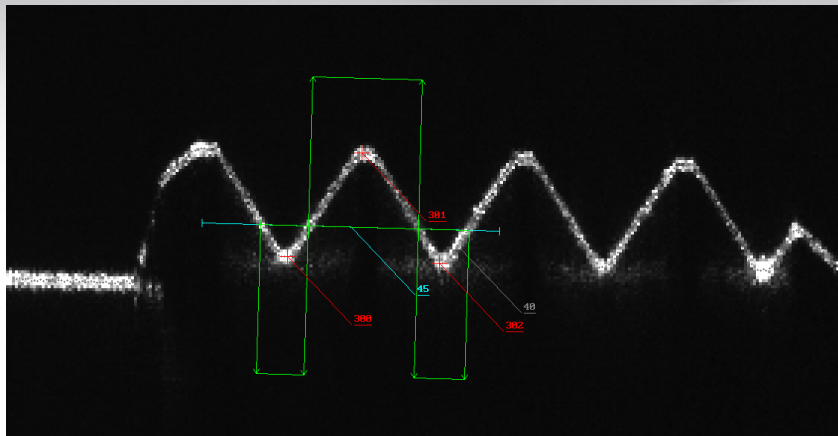
- » New function to detect barcode type
- » New function to train a context from a set of images
- » Enhanced robustness

New rectangle finder



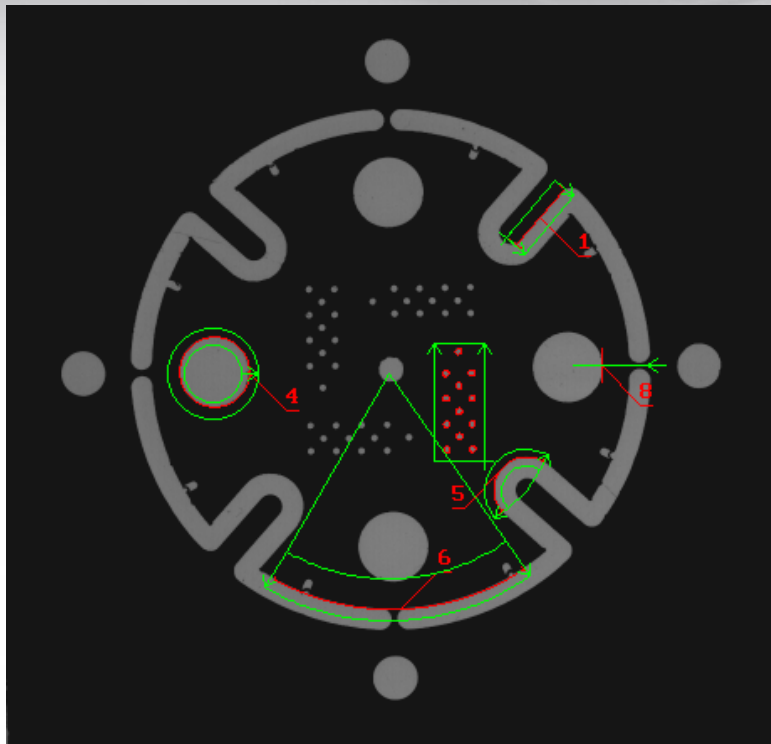
- » Dedicated tool for locating rectangles
- » Faster, more robust and more flexible than generic techniques
- » Part of Geometric Model Finder package (new context type)

Enhancements to Metrology



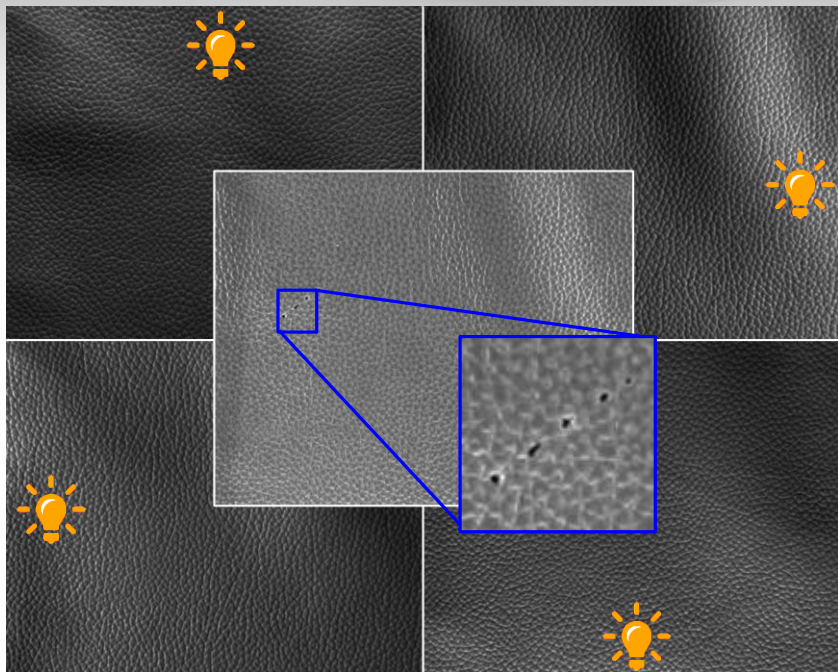
» New features and tolerances for 3D profile / cross-section analysis

New examples



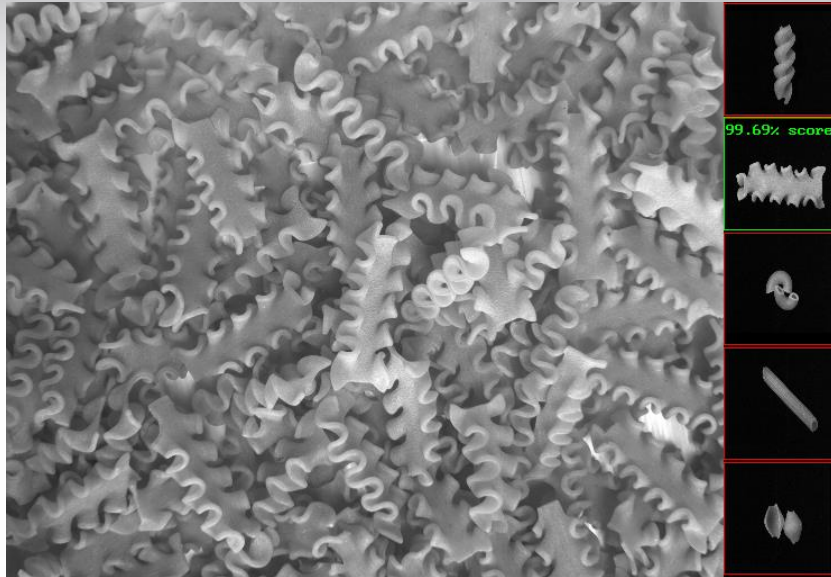
- » For using Metrology
- » Interoperability with third-party 3D sensors
- » And many more...

Support for photometric stereo



- » Generate an image that emphasizes surface irregularities from a series of images with light from different directions
- » Part of Registration package

New Classification module



- » Image content classifier
- » Uses deep learning (CNN)
- » Prediction/inference done by MIL on a CPU
- » Trained by Matrox
- » Optimized for user applications