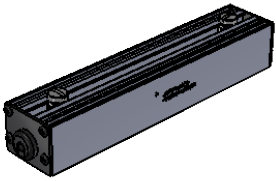
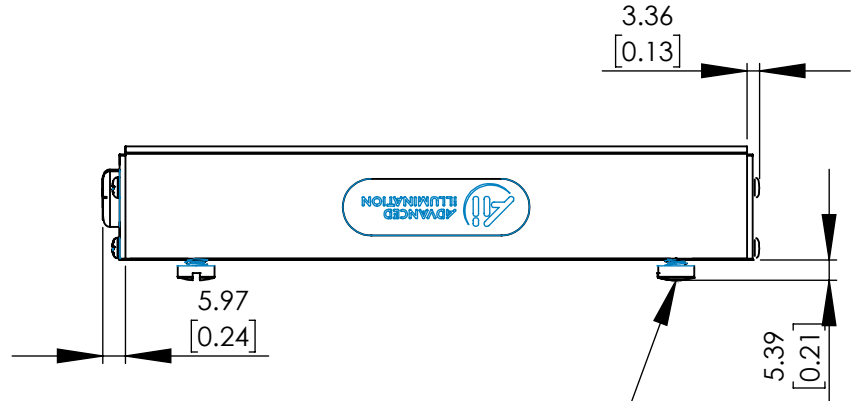
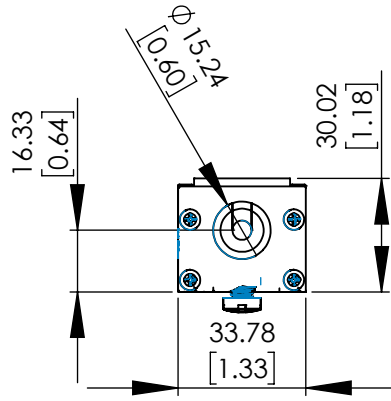
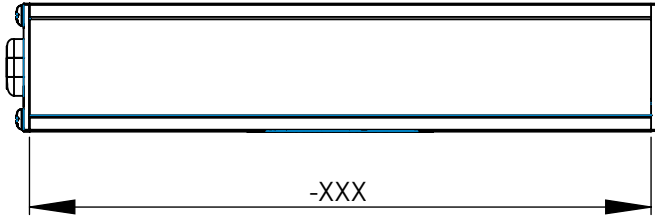


BL193 LENGTH CHART

PART NUMBER	LENGTH (XXX)
BL19302	2.475"/62.9mm
BL19304	4.475"/113.7mm
BL19306	6.475"/164.5mm
BL19308	8.475"/215.3mm
BL19310	10.475"/266.1mm
BL19312	12.475"/316.9mm
BL19314	14.475"/367.7mm
BL19316	16.475"/418.5mm
BL19318	18.475"/469.3mm
BL19320	20.475"/520.1mm
BL19322	22.475"/570.9mm
BL19324	24.475"/621.7mm
BL19326	26.475"/672.5mm
BL19328	28.475"/723.3mm
BL19330	30.475"/774.1mm
BL19332	32.475"/824.9mm
BL19334	34.475"/875.7mm
BL19336	36.475"/926.5mm
BL19338	38.475"/977.3mm
BL19340	40.475"/1028.1mm
BL19342	42.475"/1078.9mm
BL19344	44.475"/1129.7mm
BL19346	46.475"/1180.5mm
BL19348	48.475"/1231.3mm
BL19350	50.475"/1282.1mm
BL19352	52.475"/1332.9mm
BL19354	54.475"/1383.7mm
BL19356	56.475"/1434.5mm
BL19358	58.475"/1485.3mm
BL19360	60.475"/1536.1mm
BL19362	62.475"/1586.9mm
BL19364	64.475"/1637.7mm
BL19366	66.475"/1688.5mm
BL19668	68.475"/1739.3mm
BL19370	70.475"/1790.1mm
BL19372	72.475"/1840.9mm
BL19374	74.475"/1891.7mm
BL19376	76.475"/1942.5mm
BL19378	78.475"/1993.3mm
BL19380	80.475"/2044.1mm

REVISIONS			
REV.	DESCRIPTION	DATE	DCN NO



FOR REFERENCE ONLY

PROPRIETARY AND CONFIDENTIAL
 THESE DRAWINGS AND SPECIFICATIONS ARE THE EXCLUSIVE PROPERTIES OF ADVANCED ILLUMINATION INCORPORATED ISSUED IN STRICT CONFIDENCE AND SHALL NOT, WITHOUT THE PRIOR WRITTEN PERMISSION OF ADVANCED ILLUMINATION INC BE REPRODUCED, COPIED OR USED FOR ANY PURPOSE WHATSOEVER EXCEPT FOR THE MANUFACTURE OF ARTICLES FOR ADVANCED ILLUMINATION INC

UNLESS OTHERWISE SPECIFIED:		DATE	NAME
SURFACE SHOULD BE FREE OF SCRATCHES, BURRS, AND DENTS	DRAWN	--	--
DIMENSIONS ARE IN: INCHES	CHECKED	--	--
<u>TOLERANCES</u>	APPROVED	--	--
FRACTIONAL: 1/16	MATERIAL	--	--
ANGULAR: MACH ± 1 BEND ± 1	FINISH	--	--
TWO PLACE DECIMAL ± .010			
THREE PLACE DECIMAL ± .005			
MAKE FROM			

ADVANCED ILLUMINATION
 24 PEAVINE DRIVE, ROCHESTER, VERMONT 05767

TITLE:
 DRAWING, INSTALLATION, BL193

SIZE DWG. NO. REV
A BL193 -

SCALE: NTS C CODE: SHEET 1 OF 1