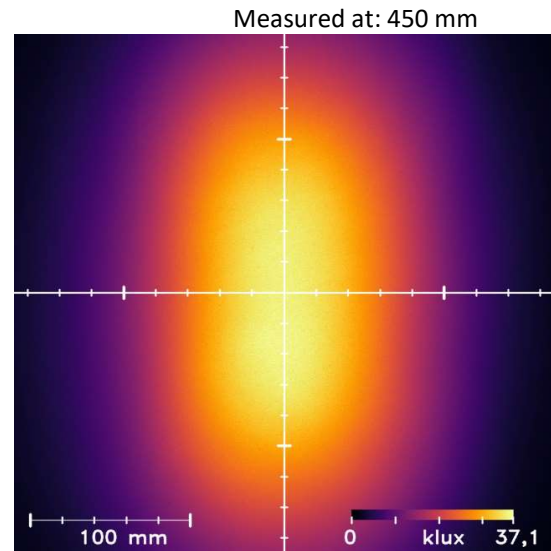
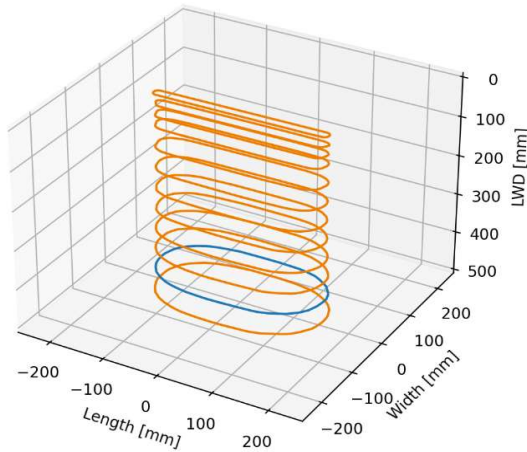


High Power Barlight MBL-0230-WT-s



Color: White 5000K CRI80



Distance [mm]	Peak Illuminance [klux]	Peak Irradiance [W/m ²]	FWHM length [mm]	FWHM width [mm]
25	510	1657	8	316
100	170	551	40	308
250	70	228	93	300
400	42	137	145	301
500	33	107	175	302

All values are measured example values for steady light mode with a tolerance range of +/- 8% for typical values.