



imaging starts with light



LED lighting, controller and accessories for industrial machine vision

Made in Germany ▪ Expert Advice ▪ Fair prices ▪ Short delivery times

FLEX LIGHT

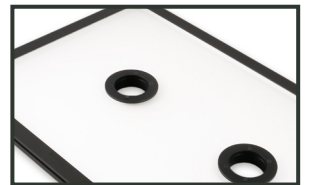
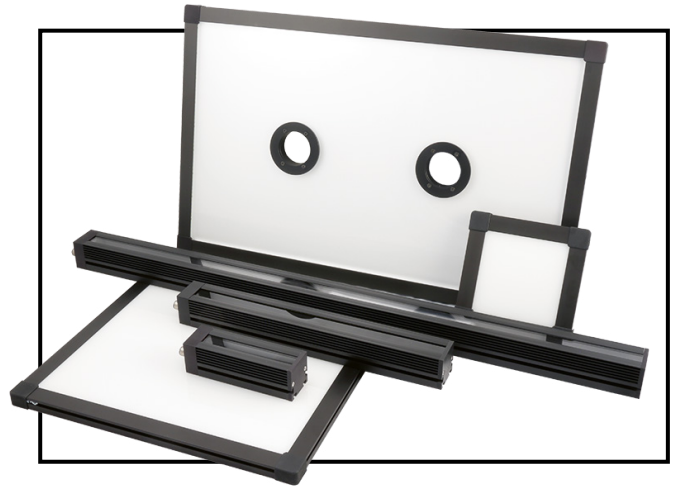
Flex Series

The right LED lighting for your project

You specify the size and beam characteristics: choose from Bar-, Top- or Backlight and scale the sizes in 100 mm steps up to 1600 mm (Barlight) or 800 x 1000 mm (Top-/Backlight). Benefit from our standard wavelength portfolio.

Determine the size and number of camera openings and their position for the Toplight - just as you need it.

Adapt the light characteristic: For the Flexlight Bar, we offer optical foils or lenses. The Barlight can thus be used as a simple line light with diffuse, polarized or collimated light beam.



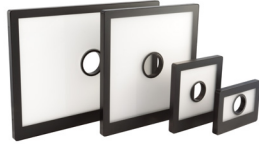
Standard Series

Choose from 6 standard colors to find the right wavelength for your project.
All lights are available with the versatile internal controller that has 4 operating modes. Alternatively, the lights are also available without the internal controller.



Backlight

Suitable for inspection and measurement of object contours.



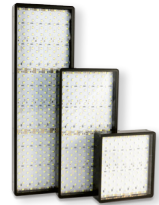
Toplight

Diffuse Toplight with lens hole for bright field applications.



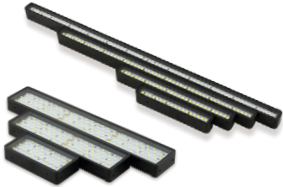
Ringlight

Direct light emission with various diameters.



Arealight

Direct light emission to illuminate larger areas.



Wide and Small Barlight

Direct light emission, versatile use for brightfield or darkfield applications.



Horizontal Ringlight

Darkfield inspection of contours or surface defects.



Coaxiallight

Uniform illumination from camera axis.



Domelight

For shadowless illumination of highly reflective objects.

High power Series

Light intense applications

Benefit from our High Power Series for light intense applications or for larger distances.

By using additional lenses and high power LEDs the High Power lights provide approximately 5 times more brightness compared to the Standard Series.

The series consists of Wide Barlights, Ringlights and Spotlights.



HIGH POWER

Controller and Accessories



CTR-50 LED-Controller

Current controlled for precise brightness settings.



CTR-51 LED-Controller

Allows very short flash and response times in the μ s range.



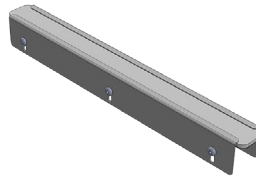
CTR-52 LED-Controller

Controls up to four independent LED channels via current or voltage settings.



Connection Cable

Different lengths, plugs and camera types.



Optical Filters and matching holders

Easy adaption of light characteristics with beam foils.



Mounts

For various MBJ lights and cameras.



Visit us
www.mbj-imaging.com

Now
available!

New in 2023



Segmented Ringlight

4 individual ring segments e.g. for shape from shading applications.



RGBW Ringlight

Precise color inspection by mixing RGBW, separate white channel.



Angled Ringlight

45° angle for partial brightfield – reduces reflections and shadows.



(Power) Mini Spot

Compact and lightweight design.
As Standard or Power version.



IP 67

Dust tight and water protected
Area-, Bar- and Ringlights.



SWIR – short wave infrared

Opening up new application areas
i.e. for sorting tasks.



Visit us
www.mbj-imaging.com



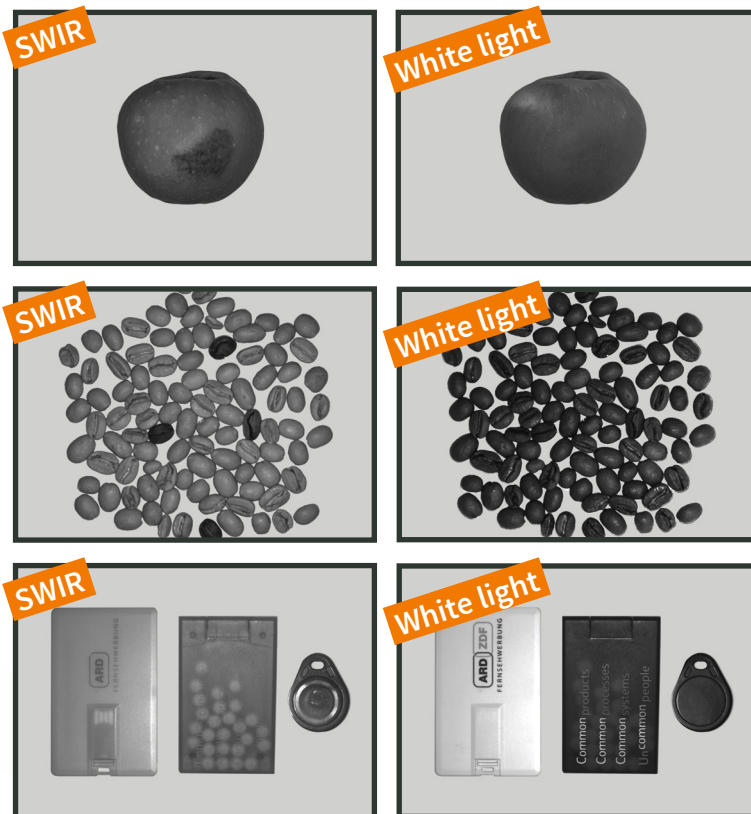
SWIR Series – See the invisible!

Opening up different application areas for image processing i.e. for semiconductor testing or food sorting.



Available wavelengths:
1050 nm, 1200 nm, 1300 nm,
1450 nm, 1550 nm, 1650 nm

Available as Bar- and Ringlights in different sizes.



Visit us
www.mbj-imaging.com



MBJ Imaging GmbH

The specialist for LED lighting



Made in Germany

We develop and manufacture all our lightings exclusively in our production facility in Ahrensburg, Germany.



Expert Advice

Take advantage of our more than 20 year long expertise knowledge of automated inspection systems and LED lighting.



Fair prices

For your benefit we consequently challenge us to develop high quality products while keeping our prices very attractive.



Short delivery times

For all standard LED lighting.



ISO 9001-2015

We live our quality management system to continously improve our products and services. We are certified by TÜV Nord since 2020.



MBJ Imaging GmbH
Jochim-Klindt-Straße 7
D-22926 Ahrensburg

☎ +49 4102 778 90 31
✉ sales@mbj-imaging.com
💻 www.mbj-imaging.com

