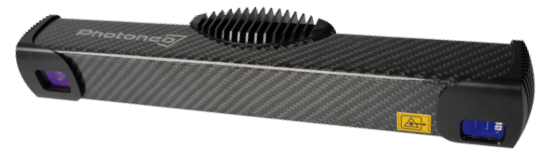


Alpha 3D Scanner XL

Datasheet



Parameter	Value
3D Sensing Technology	Structured Light
Output data	3D points (x y z) Normals (x y z) Depth Map (z) Texture (grayscale intensity) Confidence
Resolution	1.5 Million 3D Points (1440 x 1080)
Scanning range	1680 - 3780 mm
Optimal scanning distance (sweet spot)	2331 mm
Scanning area (at sweet spot)	1736 x 1421 mm
Point-to-point distance (at sweet spot)	1.52 mm
Calibration accuracy (1 σ)	1.30 mm
Temporal noise (1 σ)	1.00 mm
Scanning time	from 450 ms
Dimensions	416 x 68 x 86 mm
Baseline	3500 mm
Weight	950 g
Temperature working range	Full: 0 - 40 degrees Optimal: 22 - 25 degrees
Power	PoE or 24V
Data connection	1 Gbit Ethernet

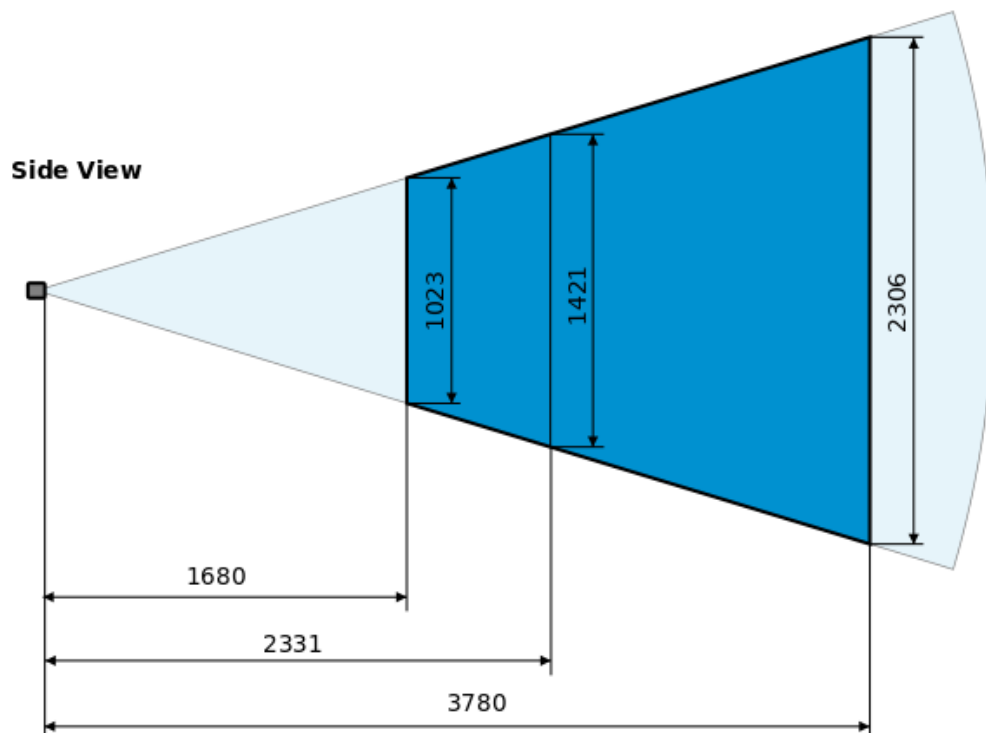
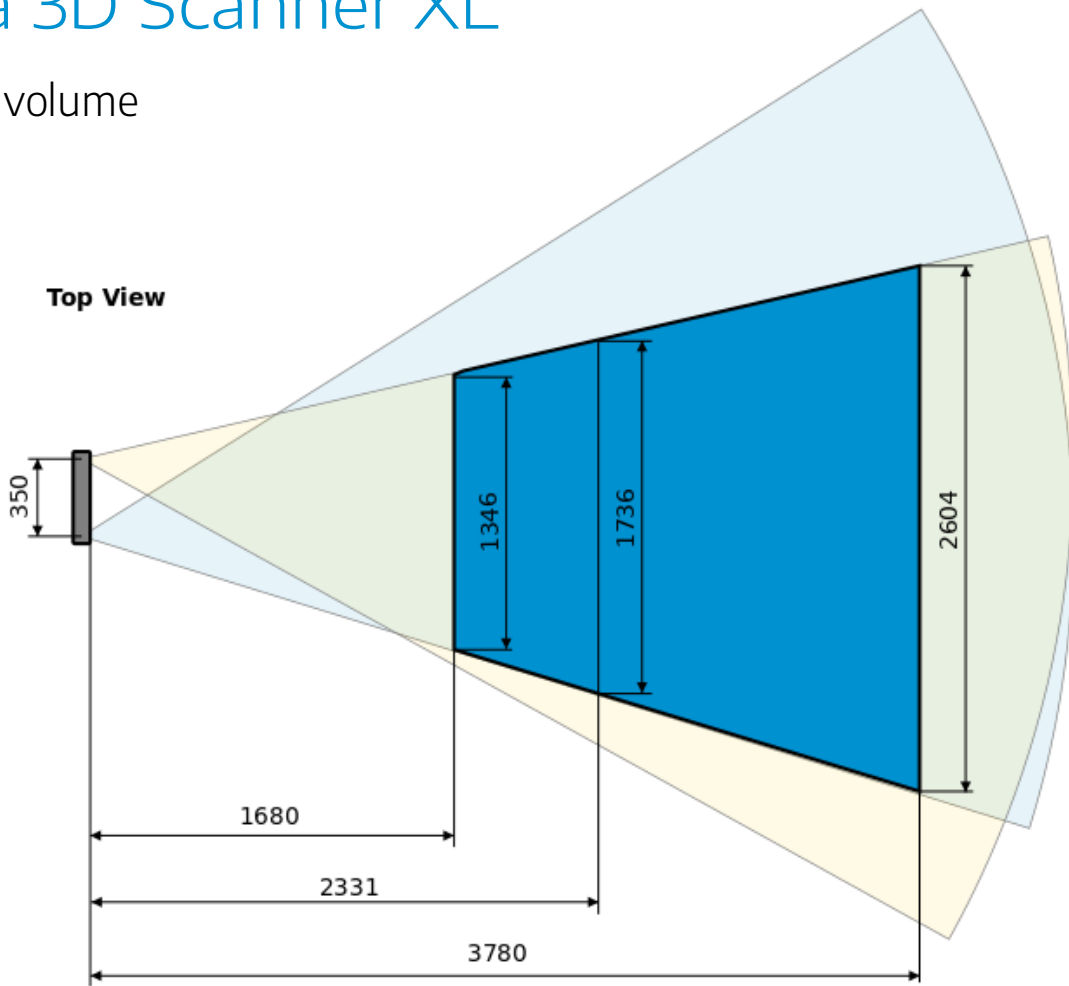
These parameters are valid at 22 °C - 25 °C at focus distance for white objects with 80% albedo.

For operation and installation instructions, please refer to the User Manual and CAD models available at: <https://photoneo.com/kb/device-resources>



Alpha 3D Scanner XL

Scanning volume



Web: www.photoneo.com
 Business Inquiries: sales@photoneo.com
 Support: support@photoneo.com

Photoneo s.r.o.
 Plynárska 6
 82109 Bratislava,
 Slovakia