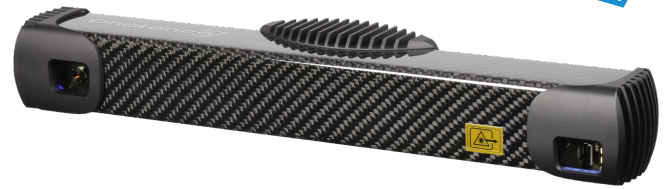


# MotionCam-3D M+



## Datasheet

Parameter	Value	
3D Sensing Technology	Parallel Structured Light	
Output data	3D points (x y z) Normals (x y z) Depth Map (z) Texture (grayscale intensity) Confidence (float)	
Scanning range	630 - 1574 mm	
Optimal scanning distance (sweet spot)	907 mm	
Scanning area (at sweet spot)	841 x 610 mm	
Operation Mode / Scene	Scanner / Static	Camera / Dynamic
Resolution	2 Million 3D points (1680 x 1200)	0.9 Million 3D points (1120 x 800)
Point-to-point distance (at sweet spot)	0.520 mm	0.760 mm
Calibration accuracy (1 $\sigma$ )	0.300 mm	0.600 mm
Temporal noise (1 $\sigma$ )	0.050 mm	0.100 mm
Maximum FPS	2 fps	20 fps
Dimensions	428 x 68 x 85 mm	
Baseline	350.0 mm	
Weight	1000 g	
Temperature working range	Full: 0 - 40 degrees Optimal: 22 - 25 degrees	
Power	PoE or 24V	
Data connection	1 Gbit Ethernet	
Processing unit	NVIDIA Pascal™ Architecture GPU with 256 CUDA cores	

These parameters are valid at 22 °C - 25 °C at focus distance for white objects with 80% albedo.

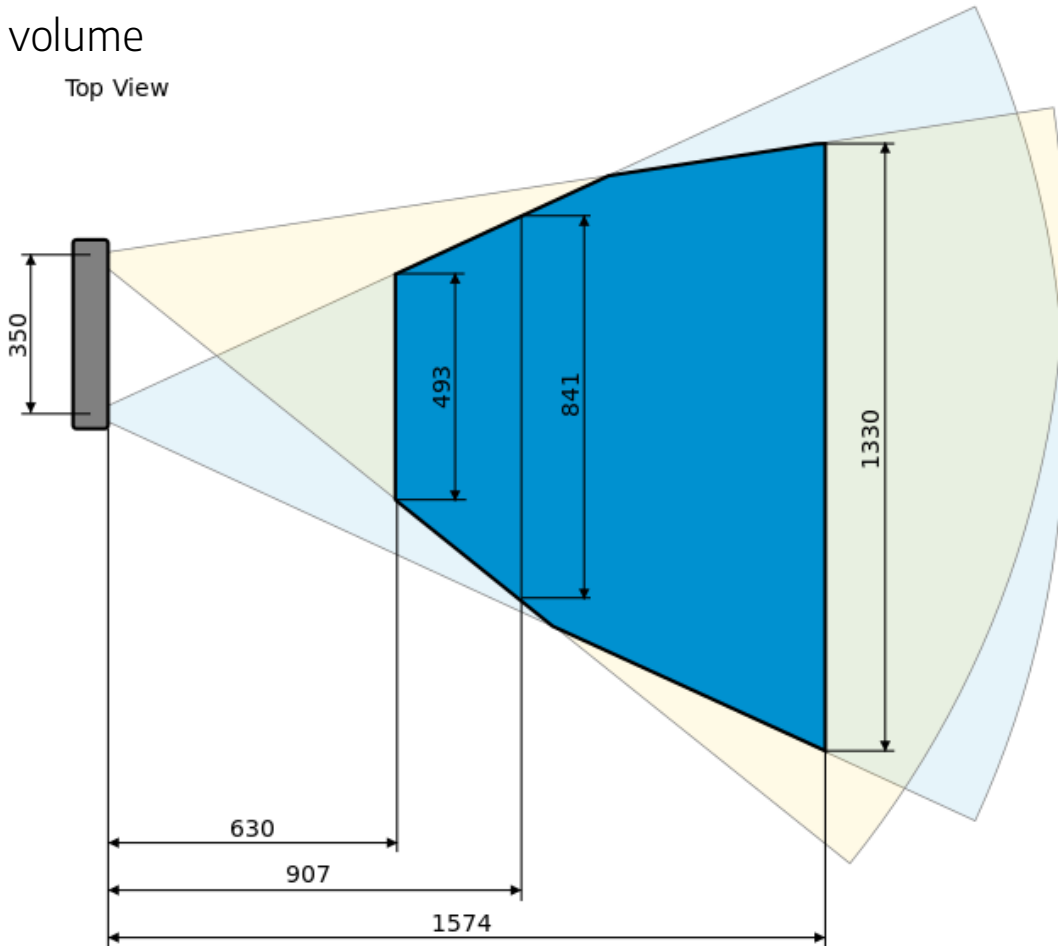
For operation and installation instructions, please refer to the User Manual and CAD models available at: <https://photoneo.com/kb/device-resources>



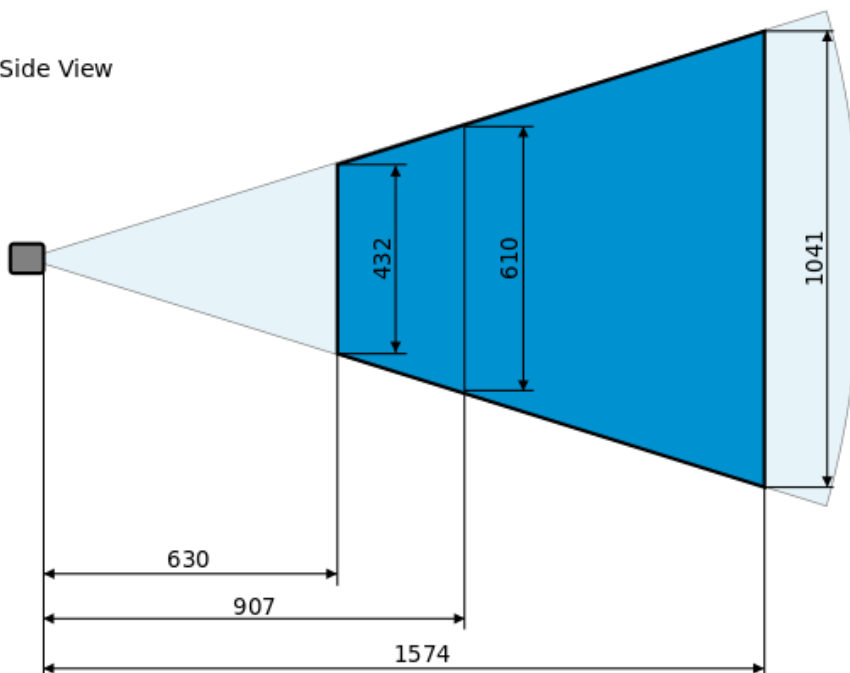
# MotionCam-3D M+

## Scanning volume

Top View



Side View



Web: [www.photoneo.com](http://www.photoneo.com)  
 Business Inquiries: [sales@photoneo.com](mailto:sales@photoneo.com)  
 Support: [Help Center](#)

Photoneo s.r.o.  
 Plynárenská 6  
 82109 Bratislava,  
 Slovakia