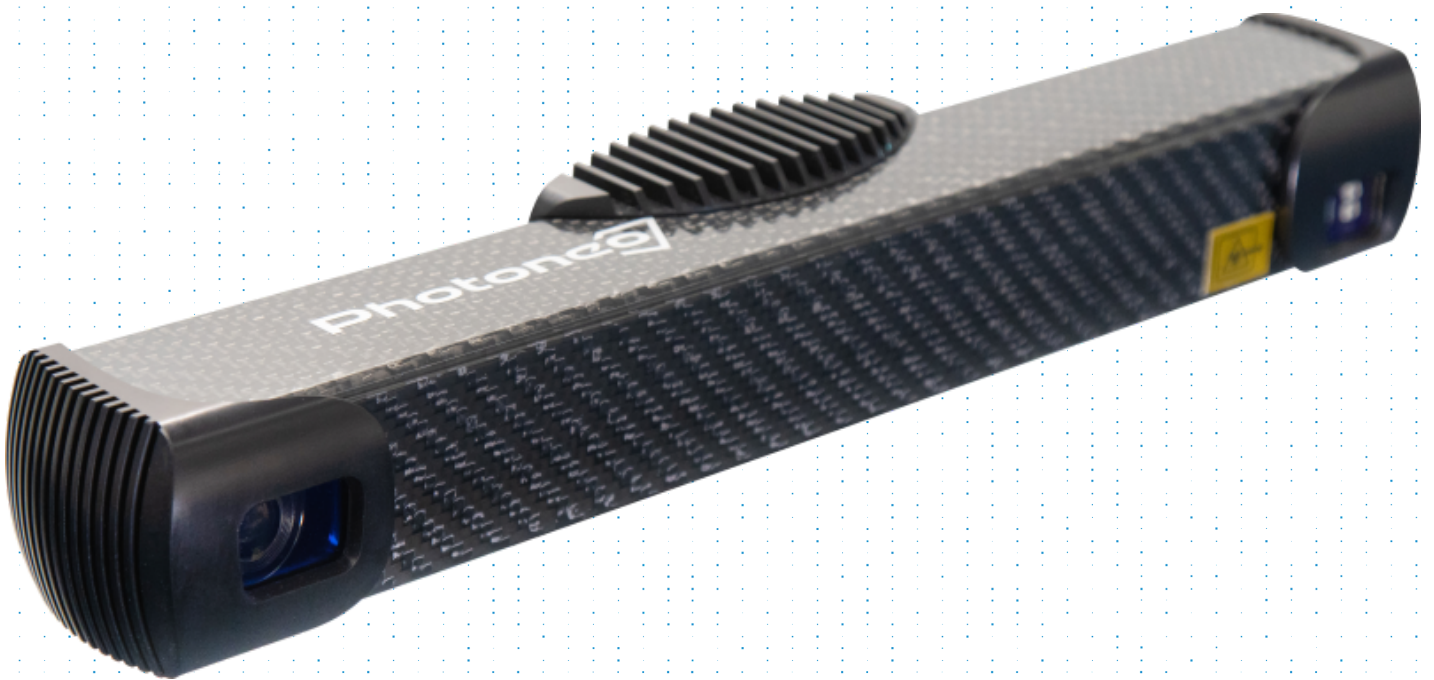


Industrial 3D vision

PhoXi 3D Scanner

Best-in-class scanning performance in
a durable body





Your go-to 3D scanner

PhoXi 3D Scanner by Photoneo is your go-to industrial scanner when looking for high-resolution and high-accuracy scanning of static scenes. Its structured light projection approach provides superior point cloud quality suitable for fast localization of static parts.



Flexible powering options

Choose between conventional 24V powering or a one cable Power-over-Ethernet type of connection options.



Dust & water proof

This IP65 rated device was designed to withstand the toughest industrial environments.



Practical scanning range

The scanning volume ranges from 15 cm up to 4 meters, enabling the scanning of a broad range of objects with diverse shapes or sizes.



Thermal calibration

The thermal calibration guarantees an optimal scanning performance at an extended range of temperatures.



High accuracy

Get 3.2 million 3D points in every scan and an accuracy of 25 - 500 μm across the range of 5 different sensor sizes.



Lightweight

The carbon body construction weighs only 1.5 kilograms. This makes it suitable for mounting directly at the robotic arm.



Easy integration

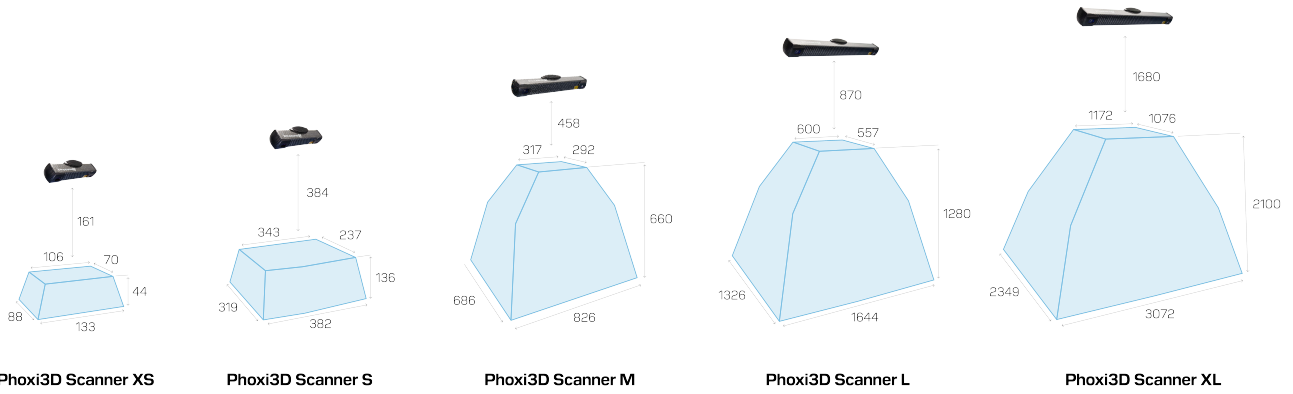
Make the first scan in just 3 minutes. The plug & play features as well as easy-to-understand user interface allow you to get scanning almost immediately after unpacking the sensor.



Scanning performance

Discover the robust performance embraced by many. No matter the shape, size, color, type or finish of scanned objects - get the best results without compromises.

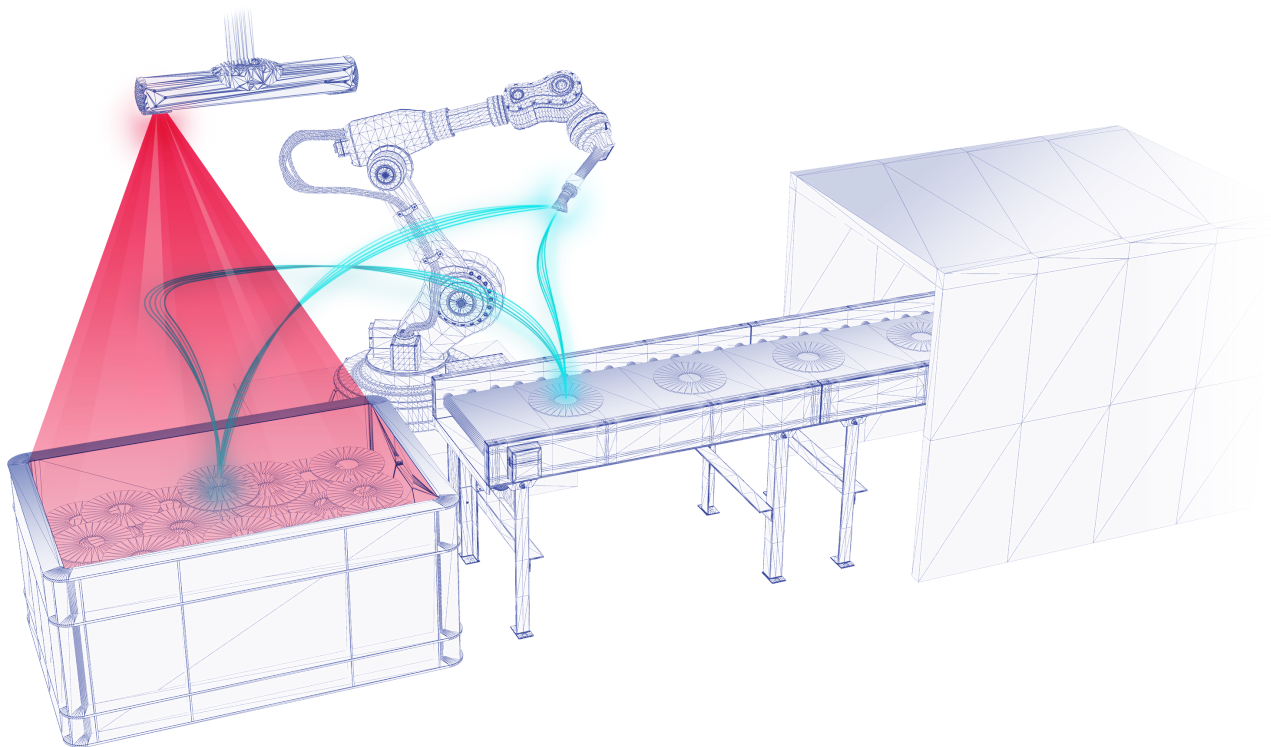
Technical parameters



	XS	S	M	L	XL
Resolution (3D points)	Up to 3.2 millions of points				
Scanning range	161 - 205 mm	384 - 520 mm	458 - 1118 mm	870 - 2150 mm	1680 - 3780 mm
Optimal scanning distance	181 mm	442 mm	650 mm	1239 mm	2326 mm
Scanning area at sweet spot	118 x 78 mm	360 x 272 mm	590 x 404 mm	1082 x 772 mm	1954 x 1459 mm
Point to point distance	0.055 mm	0.174 mm	0.286 mm	0.524 mm	0.947 mm
Calibration accuracy (1 σ)	0.035 mm	0.050 mm	0.100 mm	0.200 mm	0.500 mm
Temporal noise (1 σ)	0.030 mm	0.050 mm	0.100 mm	0.190 mm	0.400 mm
Scanning time	250 - 2000 ms	250 - 2250 ms	250 - 2500 ms	250 - 2750 ms	250 - 3000 ms
Dimensions	77 x 68 x 296 mm	77 x 68 x 296 mm	77 x 68 x 416 mm	77 x 68 x 616 mm	77 x 68 x 941 mm
Baseline	85 mm	230 mm	350 mm	550 mm	850 mm
Weight	900 g	900 g	950 g	1100 g	1200 g
3D points throughput	16 millions of points/sec				
GPU	NVIDIA Pascal™ Architecture GPU with 256 CUDA cores				

Supported software





Contact us

USA Office

Photoneo Inc.
1830 Airport Exchange
Blvd I Suite 220
Erlanger, KY 41018
Kentucky

Sales USA

+1 518-709-2653
sales-us@photoneo.com

Headquarters

Photoneo s.r.o.
Plynarenska 1
82109 Bratislava
Slovakia

Sales HQ

+421 948 766 479
sales@photoneo.com

Sales Germany

+49 160 97924817
sales@photoneo.com

China Office

Photoneo
2#309 Lane 88
Shengrong Road
Pudong New Area
Shanghai 201210

Sales China

+86 13510595522
sales@photoneo.com

